

SLIMBAY

INDUSTRIAL PROJECTOR





OVERVIEW

The SLIMBAY projector is the perfect solution for high-ceiling applications requiring intense and uniform lighting. With its sleek and compact design, the SLIMBAY can be easily installed in warehouses, factories, gyms, and other industrial environments.

Energy-efficient LED technology provides an unprecedented lighting solution, reducing the number of fixtures needed to adequately illuminate each space.

The durable construction of the SLIMBAY ensures long-lasting performance, making it an economical lighting solution.

Say goodbye to dark and gloomy spaces with the SLIMBAY projector.

The right choice

- ✓ HIGH LUMINOUS FLUX
- ✓ EXCELLENT LIGHT QUALITY
- ✓ HIGH EFFICIENCY
- ✓ MODULARITY
- ✓ WIDE RANGE OF OPTICAL SYSTEMS
- ✓ ROBUST SYSTEM
- ✓ REDUCED WEIGHT
- ✓ EASY INSTALLATION
- ✓ HIGH DURABILITY
- ✓ LOW MAINTENANCE



LOKI has always demonstrated a strong commitment to sustainability and environmental protection, combining efficient solutions that reduce energy consumption with the promotion of people's well-being and enhanced safety in the spaces where its products are used.

Application areas

The SLIMBAY is an extremely versatile industrial projector for high-level lighting in a variety of applications.



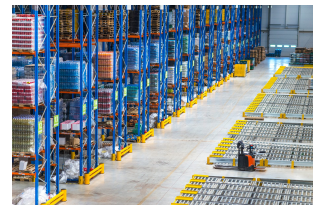
Industrial

An efficient solution for high-ceiling industrial lighting, providing intense and uniform illumination in large spaces, ensuring better visibility and safety, as well as high energy efficiency, long service life, and low maintenance.



Logistics

Designed for logistics centers, this equipment ensures uniform lighting across large storage and circulation areas. It provides clear, glare-free visibility, guaranteeing safety and efficiency in daily operations.



Sports

For sports lighting, this equipment is designed to evenly illuminate the entire playing field, ensuring clear, glare-free visibility during training and competitions.



Product range

SLIMBAY



2M



3M



4M

Technical data

SLIMBAY



Photometric data

CCT

3000 | 4000 | 5000 K

CRI

70 | 80

Luminous flux

≤ 60,000 lm

Luminous efficacy

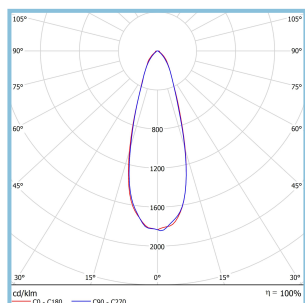
≤ 200 lm/W

Beam type

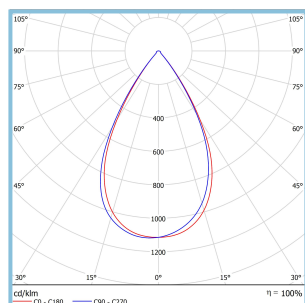
Symmetrical

Emission angle

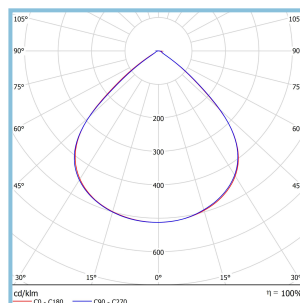
M | W | XW | O



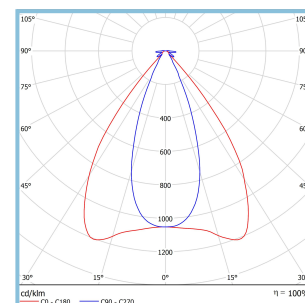
M



W



XW



THE



Electrical data

Input voltage

198-264 V AC / 50-60 Hz

Ripple current

≤ 5%

Input power

≤ 180 W (2M) | ≤ 270 W (3M) | ≤ 360 W (4M)

Power factor

≥ 0.95

Overvoltage prot.

6 kV DM / 10 kV CM

Input current

≤ 782 mA AC (2M) | ≤ 1174 mA AC (3M) | ≤ 1565 mA AC (4M)

Harmonic distortion

≤ 20%

Safety class

Class I (EN60598)

Technical data



Mechanical data

Heatsink

Anodized aluminum

Color

Black (RAL9900)

Width (A)

170mm (2M) | 265mm (3M) | 360mm (4M)

Body

Lacquered aluminum

Height (C)

172 mm

Mass

4.3kg (2M) | 6.0 kg (3M) | 7.5kg (4M)

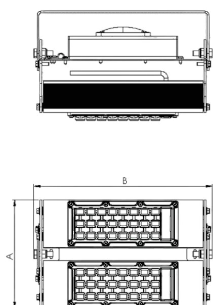
Fixation

Stainless steel

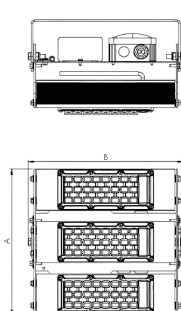
Length (B)

280 mm

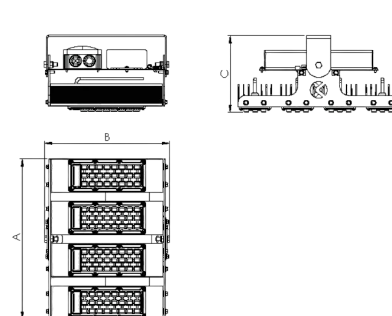
2M



3M



4M



Control data

Interface

S/C | 0-10V (Dim-to-Off) | DALI2



Accessories

Optional

NA

Notice:

Our equipment is sized according to the specific needs of each project. The specifications presented correspond to the most common configurations and are for informational purposes only. For more information on other available options, please contact us.



Founded in February 2014 and headquartered in Águeda, Portugal, LOKI is a technological innovation company dedicated to the research, design, development, and production of high-performance lighting systems based on state-of-the-art LED technology. Operating exclusively in the professional market, we cover a wide range of application areas, always adhering to the highest standards of quality and technical requirements.

LOKI has a professional and multidisciplinary team with over twenty years of experience in the lighting industry, and specifically in LED technology. This accumulated experience allows us to develop solutions focused on people's well-being, environmental sustainability, and business.

For more information, please contact us:



info@loki-lighting.com
+351 234 092 322
www.loki-lighting.com

LOKI - UNIPessoal, LDA

Rua João Batista, No. 12 (EN230), 3750-753 Travassô,
Águeda, Portugal

